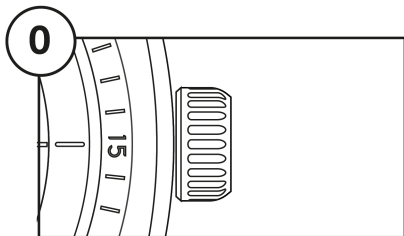
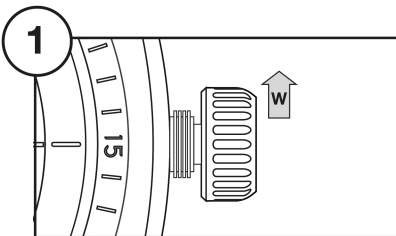


## THE MÅNE - USER INSTRUCTIONS

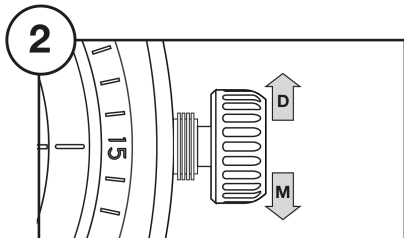


**CROWN SCREWED**



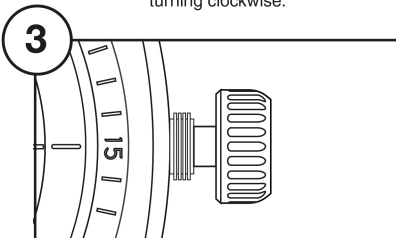
### **WINDING POSITION**

Unscrew the crown from position 0 turning anti clockwise. When crown is released wind by turning clockwise.



### **MOONPHASE AND DATE**

Pull the crown once from position 1.  
Set the moonphase by turning anti clockwise or  
date by turning clockwise



### **TIME SETTING**

Pull the crown once from position 2.  
Set hour and minutes by turning the crown

MOVEMENT - SELLITA 288-1-1



Movement diameter: 25,60 mm



Movement height - 5,65 mm



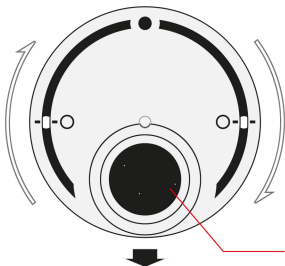
Frequency - 28'800 A/h (4 Hz)



Power reserve - 38 hours

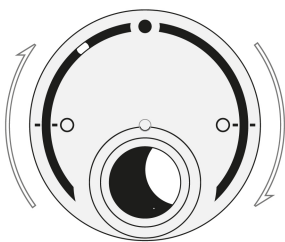
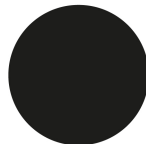
**THOMAS FUNDER**

## THE MÅNE PHASES MODULE - EXPLAINED



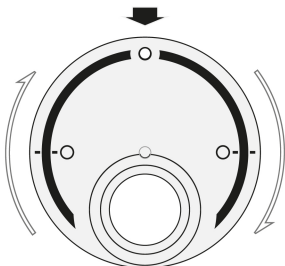
### NEW MOON

When the 2 moons are horizontally aligned it will be new moon



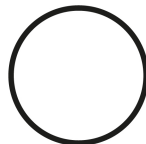
### FIRST QUARTER

The moon appears in the big opening of the dial.

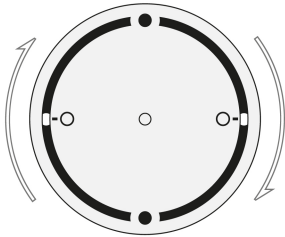


### FULL MOON

The small moon and the big moon will be vertically aligned. The opening is full white

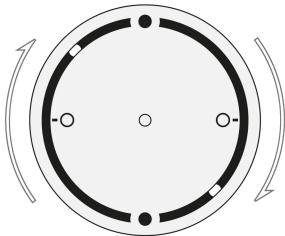


## THE MÅNE STATE MODULE - EXPLAINED



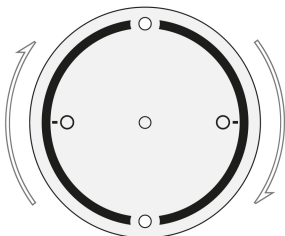
### NEW MOON

When the 2 moons are horizontally aligned it is new moon



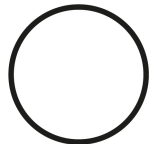
### FIRST QUARTER

When the two moons are half the distance from New moon to full moon

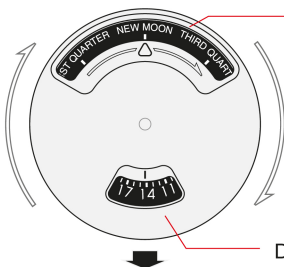


### FULL MOON

When the 2 moons are vertically aligned the full moon will be present



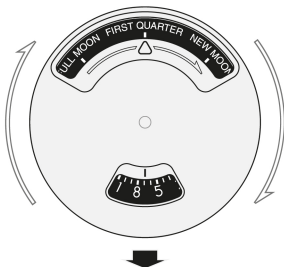
## THE MÅNE DAYS MODULE - EXPLAINED



Phases

### NEW MOON

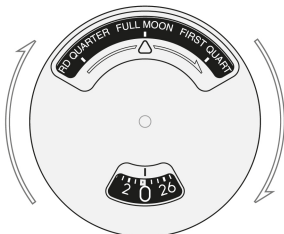
“New moon” will be visible.  
The days until full moon will be  
shown in the day counter.



Day counter

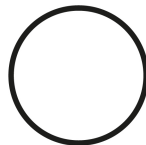
### FIRST QUARTER

“First quarter” will be seen on the  
dial and the current day until full  
moon is visible below.



### FULL MOON

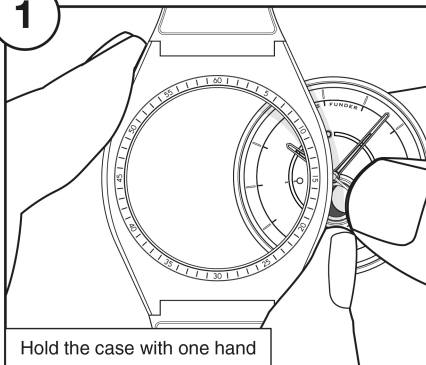
Top opening will show “Full moon”  
and the day counter will reach 0.



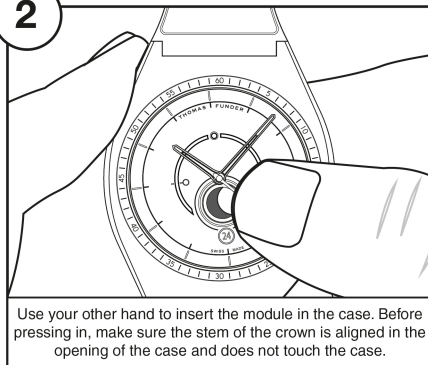


## THE MÅNE - HOW TO INSERT THE MODULE

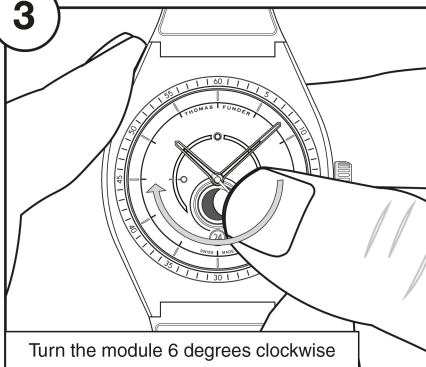
1



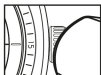
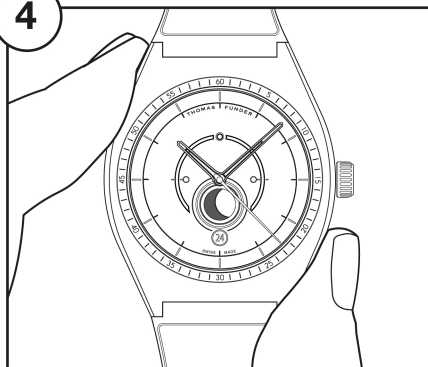
2



3



4

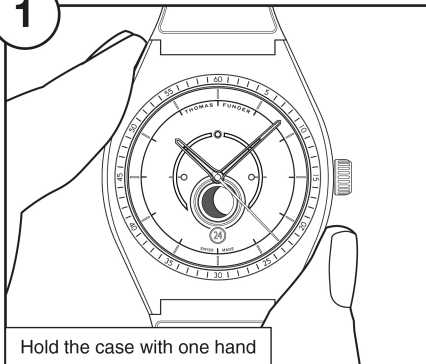


Do not manipulate or push-pull the crown and the crown stem when extracting or inserting the module. This might damage the crown and the functioning of the movement

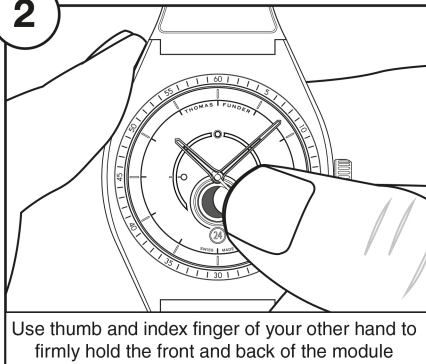
THOMAS FUNDER

## THE MÅNE - HOW TO EXTRACT THE MODULE

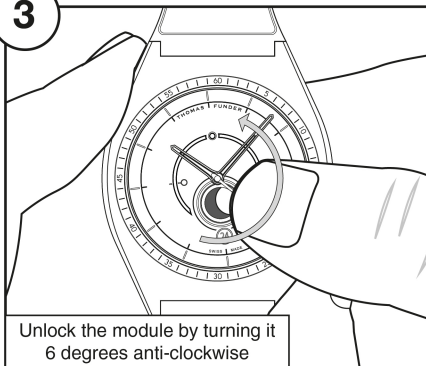
1



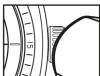
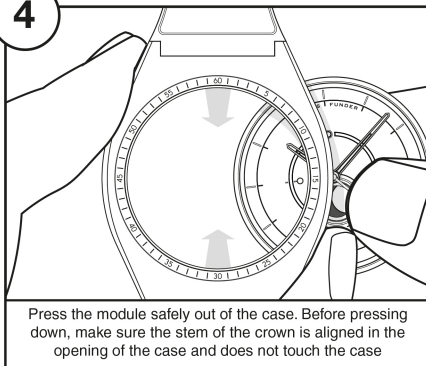
2



3



4



Do not manipulate or push-pull the crown and the crown stem when extracting or inserting the module. This might damage the crown and the functioning of the movement

THOMAS FUNDER